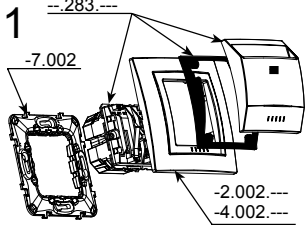




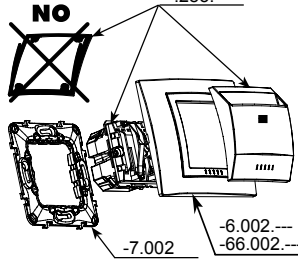
--283.--



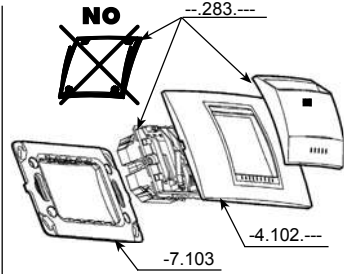
Unica basic
Unica colors

Interruptor Tarjeta 10 A
Карточный выключатель 10 A
Key Card Switch 10 A
Interrupteur à Badge 10 A

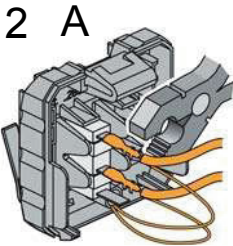
Instrucciones de empleo
Инструкция по монтажу
Instruction sheet
Notice de montage



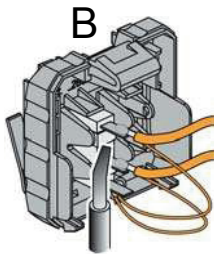
Unica plus
Unica top



Unica allegro

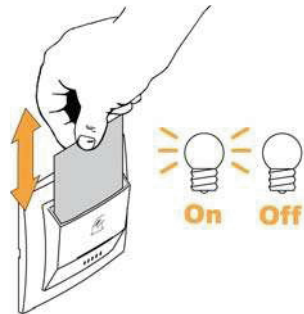


Faston

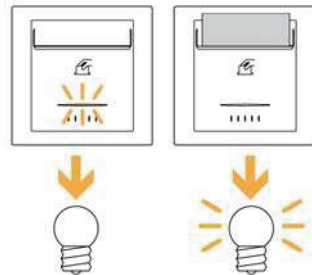
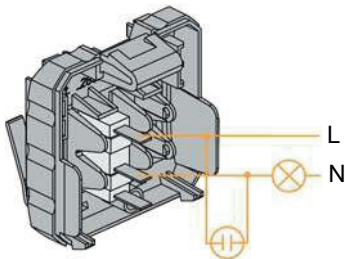


Soldadura / Пайка / Soldering / Soudure

4



3



Para cargas fluorescentes con factor de potencia corregido se deberá gobernar la carga a través de un relé adecuado.

Управление люминесцентными лампами при помощи контактора

For fluorescent loads with a corrected power factor, the load should be controlled through an appropriate relay.

Pour les charges fluorescentes ayant un facteur de puissance corrigé, on devra gouverner la charge au moyen d'un relais approprié.